

CHANNELS ACCESSORIES

FITTINGS

NOTE: Stainless Steel Orders are manufactured under firm orders only.
MATERIAL SPECIFICATION Thickness = 6mm Width = 40mm Hole Diameter = 14mm

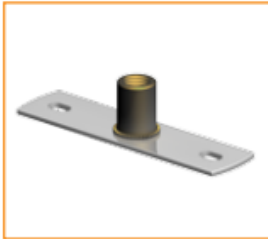
MOUNTING PLATES



TYPE B

VERTICAL
MOUNTING
PLATE

W = 0.32kgs



TYPE A

CENTRAL
MOUNTING
PLATE NUT
PUNCHED

W = 0.32kgs



TYPE C

VERTICAL
MOUNTING
PLATE NUT
PUNCHED

W = 0.32kgs